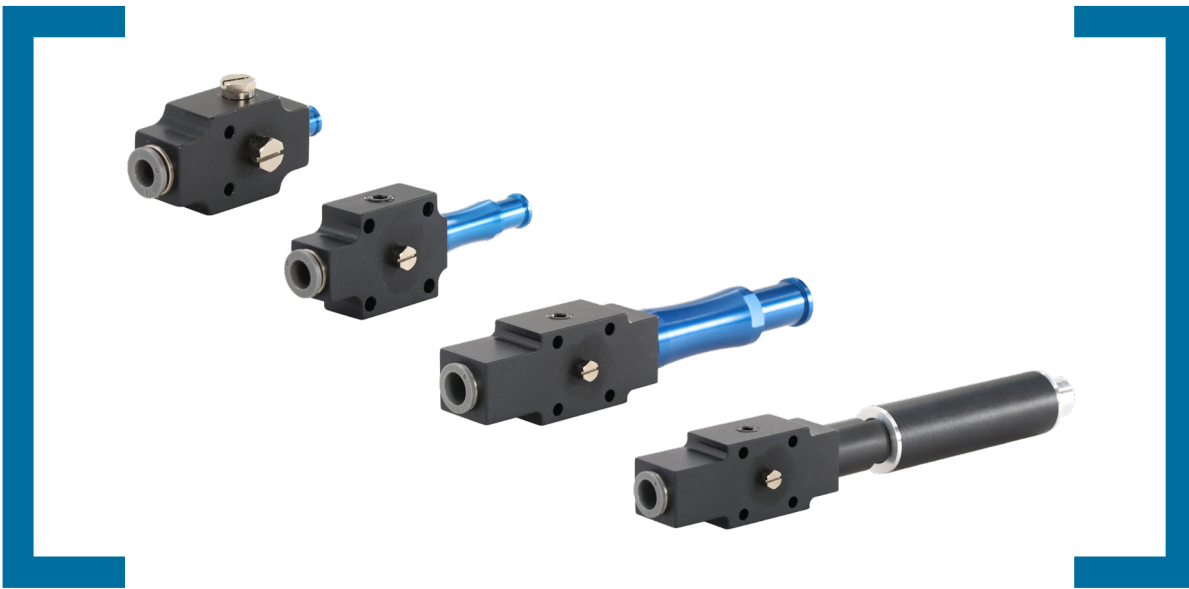




Multi-Stage Vacuum Pump & Cartridges

Get the Flexibility You Deserve



Bimba's **NEW** MSV Series Multi-Stage Vacuum Pump provides the greatest flexibility when tuning the performance to any application. With 27 performance levels, it is easy to balance vacuum level, vacuum flow, and air consumption to optimize your application.

The multi-stage configuration offers the advantage of high flow rates at lower vacuum levels with less air consumption while the single stage configuration offers our classic non-clogging flow through design. These pumps provide the best mix of performance, size, and air consumption in three body sizes.

Interchangeable threaded cartridges allow for easy changes to performance without uninstalling the entire pump. Cartridges are also designed to be easily integrated into custom vacuum manifolds and machines.

Features & Benefits

- » Compact design allows for easy integration into any application
- » Extreme flexibility to easily change between 27 different performance levels and endless configurations
- » Offers high efficiency with higher flow rates and lower air consumption
- » Non-clogging single stage flow through option configuration reduces downtime and eliminates the need for filters

Applications

- » Pick & Place
- » Packaging
- » Vessel Evacuation
- » Vacuum Clamping/Holding
- » Vacuum Filling/Bottling Operations
- » End-of-Arm Tooling/Robotics

Ordering Information - MSV Series Vacuum Pump

MSV07-060L2-60-VSMN-QD-6

Size		Performance (Max. Flow, Max. Vacuum) Stages				Supply Pressure		Sensor/Switch	
07	Min	060L2	0.6 SCFM, 22.1 "Hg (Min) 2 Stage	150M1	3.5 SCFM, 20 "Hg (Mid) 1 Stage	Blank	80 PSI [5.5 bar](Standard)	Blank	None
14	Mid	060M1	0.5 SCFM, 20 "Hg (Min, Mid) 1 Stage	150H1	3.2 SCFM, 28 "Hg (Mid) 1 Stage	Blank	58-78 PSI [4-6 bar] (Standard L & H, 2 or 3 stage)	VSMN-QD-6	NPN Switch
25	Max	060M2	0.6 SCFM, 25.1 "Hg (Min) 2 Stage	200L1	6.0 SCFM, 10 "Hg (Max - Short) 1 Stage	Blank	24-58 PSI [1.7-4 bar] (Standard L & H, 2 or 3 stage)	VSMP-QD-6	PNP Switch
		060H1	0.5 SCFM 28 "Hg (Min, Mid) 1 Stage	200L2	6.3 SCFM, 22.1 "Hg (Max) 2 Stage	Blank	24-58 PSI [1.7-4 bar] (Standard L & H, 2 or 3 stage)	VTMV-QS-6	1-5V DC Sensor
		060H2	0.7 SCFM 27.2 "Hg (Min) 2 Stage	200M1	6.0 SCFM, 20 "Hg (Max - Short) 1 Stage	60	60 PSI [4.0 bar]		
		090L1	1.3 SCFM, 10 "Hg (Mid) 1 Stage	200H1	5.4 SCFM, 28 "Hg (Max - Short) 1 Stage				
		090L2	1.4 SCFM, 21.6 "Hg (Mid) 2 Stage	200H2	6.0 SCFM, 28.1 "Hg (Max) 2 Stage				
		090M1	1.4 SCFM, 20 "Hg (Mid) 1 Stage	250L1	9.5 SCFM, 10 "Hg (Max - Short) 1 Stage				
		090M2	1.5 SCFM, 26.6 "Hg (Mid) 2 Stage	250M1	9.5 SCFM, 20 "Hg (Max - Short) 1 Stage				
		090H1	1.2 SCFM, 28 "Hg (Mid) 1 Stage	250H1	9.0 SCFM, 28 "Hg (Max - Short) 1 Stage				
		090H2	1.6 SCFM, 27.8 "Hg (Mid) 2 Stage	265LS	12.7 SCFM, 22.1 "Hg (Max) 3 Stage				
		091L2	1.6 SCFM, 22.1 "Hg (Mid) 2 Stage	265H3	13.1 SCFM, 28.1 "Hg (Max) 3 Stage				
		100L1	2.1 SCFM, 10 "Hg (Mid) 1 Stage	300L1	20 SCFM, 10 "Hg (Max - Long) 1 Stage				
		100L3	2.4 SCFM, 22.1 "Hg (Mid) 3 Stage	300M1	20 SCFM, 20 "Hg (Max - Long) 1 Stage				
		100M1	2.1 SCFM, 20 "Hg (Mid) 1 Stage	300H1	20 SCFM, 28 "Hg (Max - Long) 1 Stage				
		100M3	2.4 SCFM, 26.6 "Hg (Mid) 3 Stage	350L1	28 SCFM, 10 "Hg (Max - Long) 1 Stage				
		100H1	2.0 SCFM, 28 "Hg (Mid) 1 Stage	350M1	28 SCFM, 20 "Hg (Max - Long) 1 Stage				
		100H3	2.4 SCFM, 27.8 "Hg (Mid) 3 Stage	350H1	28 SCFM, 28 "Hg (Max - Long) 1 Stage				
		150L1	3.5 SCFM, 10 "Hg (Mid) 1 Stage						

*Add "I-" to the front of the part number for Metric. Part numbers listed above are in Imperial

Ordering Information - C-CH and C-MS Series Replacement Cartridges

CM60L2-M07-MS

Size		Performance (Max. Flow, Max. Vacuum) Stages		Mating Body		Type	
C	Min, Mid, Max	M60L2	0.6 SCFM, 22.1 "Hg (Min) 2 Stage	M07	MSV07 (Min)	MS	Multi-Stage Cartridge
		M60M2	0.6 SCFM, 25.1 "Hg (Min) 2 Stage	M14	MSV14 (Mid)	CH	Multi-Stage Cartridge with Holder
		M60H2	0.7 SCFM 27.2 "Hg (Min) 2 Stage	M25	MSV25 (Max)		
		090L2	1.4 SCFM, 21.6 "Hg (Mid) 2 Stage				
		090M2	1.5 SCFM, 26.6 "Hg (Mid) 2 Stage				
		090H2	1.6 SCFM, 27.8 "Hg (Mid) 2 Stage				
		091L2	1.6 SCFM, 22.1 "Hg (Mid) 2 Stage				
		100L3	2.4 SCFM, 22.1 "Hg (Mid) 3 Stage				
		100M3	2.4 SCFM, 26.6 "Hg (Mid) 3 Stage				
		100H3	2.4 SCFM, 27.8 "Hg (Mid) 3 Stage				
		200L2	6.3 SCFM, 22.1 "Hg (Max) 2 Stage				
		200H2	6.0 SCFM, 28.1 "Hg (Max) 2 Stage				
		265L3	12.7 SCFM, 22.1 "Hg (Max) 3 Stage				
		265H3	13.1 SCFM, 28.1 "Hg (Max) 3 Stage				

→ Find out more
bimba.com

