



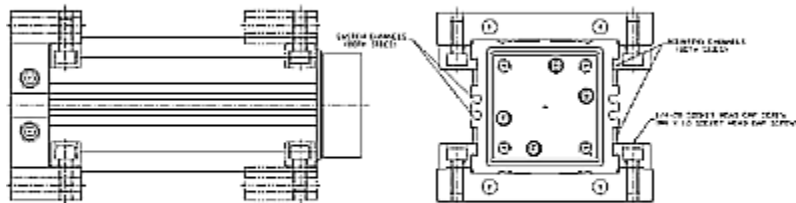
# PneuMoment® End Flange Mounting Instructions

## Threaded Hole Through Holes

- PM-EF-09 - U. S. Customary Measure PM-EFT-09 - U.S. Customary Measure
- PMM-EF-09 - Metric Measure PMM-EFT-09 - Metric Measure

## Parts Supplied

- 4 Attachment Clamps
- 4 Attachment Clamp socket head cap screws (SHCP)
- 2 Flange Brackets



The flange mounting bracket can be connected to the PneuMoment anywhere along the guide beam. It can be mounted flush with either end of the guide beam or extended beyond the guide beam by installing the bracket with the attachment clamp holes pointing away from the end of the guide beam.

## Top and Bottom Brackets

- Lay the flange bracket across the non-switch track sides of the guidebeam.
- Insert the dove tail or angular side of the attachment clamp into the channel that runs along the guide beam.
- Using the SHCP screws provided, tighten the attachment clamp to the flange bracket. Torque the SHCP screws connecting the attachment clamp to the flange bracket to 100 inch pounds- 11.3 Newton meters.

## Instruction Notes:

- The switch channel is not engineered for mounting the actuator.
- Install the attachment clamp so that the entire width of the dove tail or angular side of the clamp is engaged in the guide beam channel.

Connect the PneuMoment by inserting 4 (two per bracket) threaded or through hole fasteners (depending on the model purchased) through the flange bracket.

The information presented is in Bimba's best engineering opinion and should be used for reference only. Recommendations derived should be verified under actual operating conditions. Bimba reserves the right to change specifications without prior notice.

**Bimba Manufacturing Company**  
 Monee, IL 60449-0068  
 Telephone: 708.534.8544  
 Email: [cs@bimba.com](mailto:cs@bimba.com)  
[www.bimba.com](http://www.bimba.com)  
 Rev Level: 0

Leaders in Actuation.

To learn more about this product, scan this QR code with your mobile device.

