

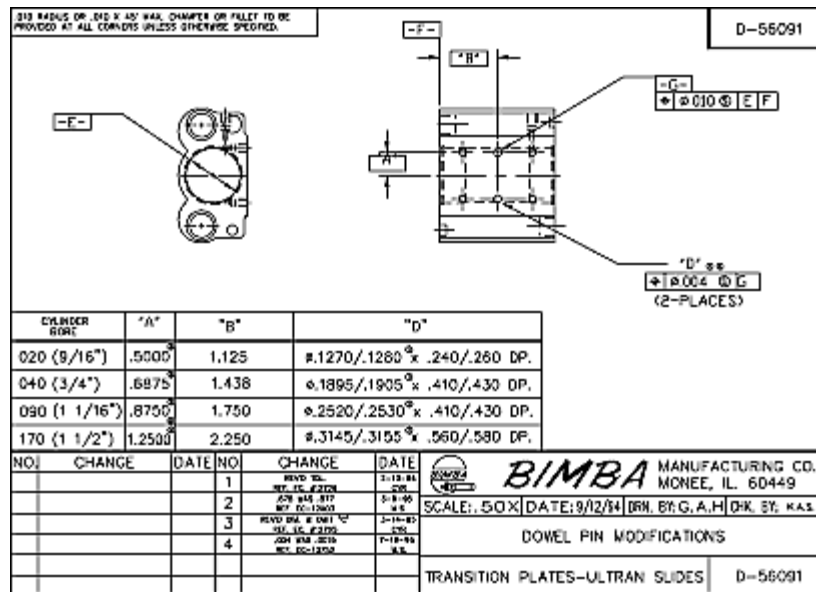


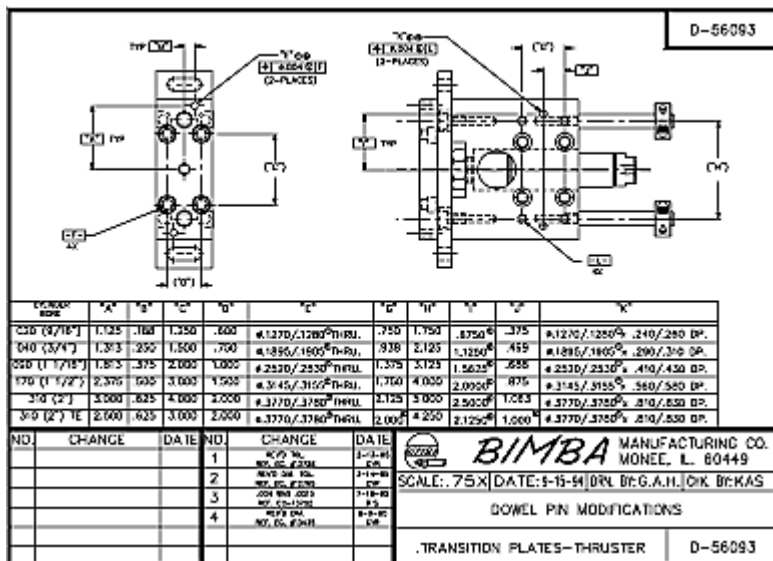
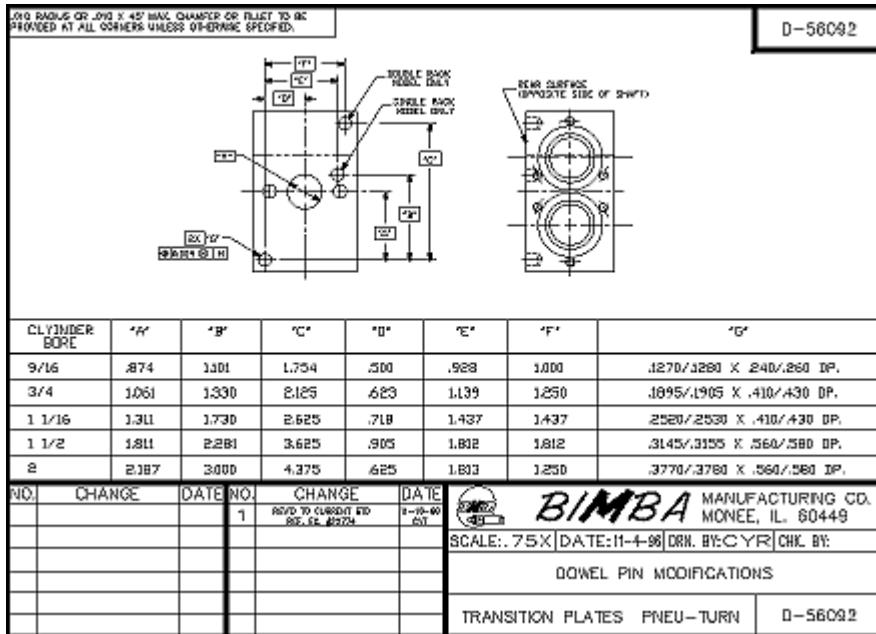
Technical Bulletins

Actuator Mounting Hole Locations For Transition Plates

The purpose of this Technical Bulletin is to provide supplementary dimensional information to our catalogs in reference to mounting hole locations.

Included are drawings and dimensional tables for our Ultran[®] Slide, Pneu-Turn[®] and Linear Thruster. The additional dowel pin holes will be present when specified on the Ultran Slide (option "D") and Linear Thrusters (option "D") and will be included on all Pneu-Turns which have ball bearings specified (option "R").





The information presented is in Bimba's best engineering opinion and should be used for reference only. Recommendations derived should be verified under actual operating conditions. Bimba reserves the right to change specifications without prior notice.

Date: 12/4/08

Rev Level: 0