

Bimba FLAT-1 Accessories

Selection Guide

(All Models)

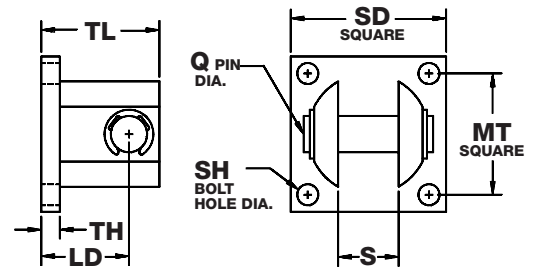
Accessory	Flat-1	Square Flat-1	Square Flat-II	Flat-II	FO2	FOP
Clevis Bracket	X	X	X	X	N/A	X
Trunnion Bracket	X	N/A	N/A	X	N/A	N/A
Rod Pivot	X	X	N/A	N/A	X	X
Pivot Attachment	N/A	X	X	N/A	N/A	N/A

Clevis Bracket

Anodized aluminum alloy, complete with stainless steel pin

Model	Bore	LD	MT	Q	S	SH	SD	TH	TL
BC-1	9/16" (02), 3/4" (04), 1-1/16" (09)	0.56	0.75	0.19	0.39	#6	1.00	0.16	0.78
BC-2	1-1/2" (17), 2" (31), 2-1/2" (50)	0.94	1.38	0.38	0.75	#10	1.75	0.22	1.34
BC-3	3" (70), 4" (125)	1.25	2.00	0.63	1.00	0.25	2.50	0.25	1.81

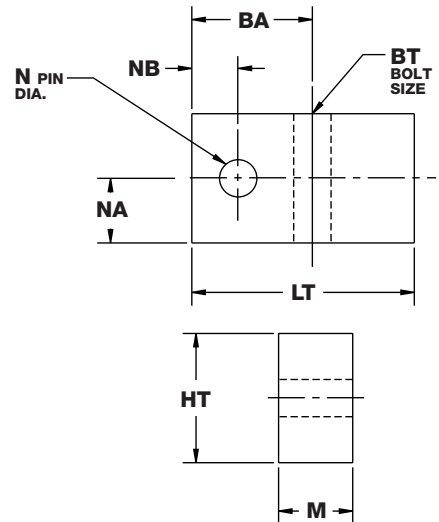
Bracket intended to mount with either rod pivot or pivot mount, not directly to the cylinder rear head.



Trunnion Bracket (pair)

Anodized aluminum alloy, complete with bronze pivot bushings

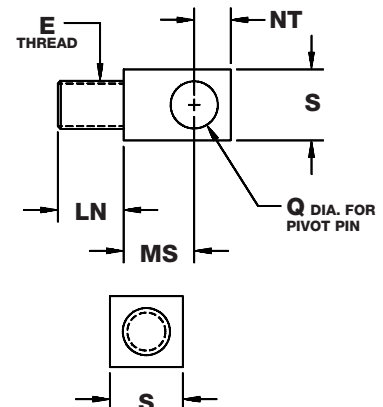
Model	Bore	BA	BT	HT	LT	M	N	NA	NB
BT-1	3/4" (04)	0.56	#10	0.63	1.12	0.31	0.13	0.30	0.22
BT-2	1-1/16" (09), 1-1/2" (17), 2" (31)	0.81	0.25	0.88	1.50	0.50	0.25	0.38	0.31
BT-3	2-1/2" (50), 3" (70)	0.94	0.31	1.00	1.63	0.63	0.31	0.45	0.38
BT-4	4" (125)	1.06	0.38	1.25	1.88	0.75	0.38	0.55	0.44



Rod Pivot

Zinc plated, high strength, heat treated alloy steel, complete with a bronze pivot bushing and nut

Model	Bore	E	LN	MS	NT	Q	S
RP-1/2	9/16" (02)	#8-32 UNC	0.38	0.47	0.25	0.19	0.38
RP-1	3/4" (04)	#10-32 UNF	0.38	0.47	0.25	0.19	0.38
RP-2	1-1/16" (09)	5/16-24 UNF	0.63	0.47	0.25	0.19	0.38
RP-3	1-1/2" (17)	3/8-24 UNF	0.63	0.72	0.44	0.38	0.75
RP-4	2" (31), 2-1/2" (50)	1/2-20 UNF	0.75	0.72	0.44	0.38	0.75
RP-5	3" (70)	5/8-18 UNF	0.88	1.00	0.63	0.63	1.00
RP-6	4" (125)	3/4-16 UNF	0.88	1.00	0.63	0.63	1.00

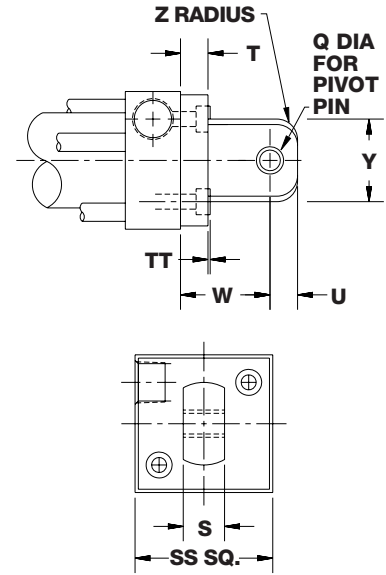


Bimba FLAT-1 Accessories

Pivot Attachment

Anodized aluminum alloy. Complete with two mounting screws. Not necessary if ordered as part of complete Square Flat-1 cylinder (1 or 1N option).

Model	Bore	Q	S	SS	T	TT	U	W	Y	Z
PM-1	3/4" (04)	0.19	0.38	1.13	0.19	0.020	0.25	0.75	0.75	-
PM-2	1-1/16" (09)	0.19	0.38	1.25	0.25	0.020	0.25	0.81	0.75	-
PM-3	1-1/2" (17)	0.38	0.75	1.75	0.25	0.025	0.44	1.19	1.38	-
PM-4	2" (31)	0.38	0.75	2.25	0.31	0.080	0.44	1.38	1.38	-
PM-5	2-1/2" (50)	0.38	0.75	3.00	0.38	0.05	0.44	1.31	1.38	0.38
PM-6	3" (70)	0.63	1.00	3.50	0.38	0.05	0.56	1.69	1.88	0.38
PM-7	4" (125)	0.63	1.00	4.50	0.44	0.12	0.56	1.75	1.88	0.38



Price List

Description	Model	List Price
Rod Pivot	RP-1/2	\$11.60
	RP-1	12.45
	RP-2	12.45
	RP-3	13.00
	RP-4	13.00
	RP-5	15.25
	RP-6	15.85
Trunnion Bracket	BT-1	12.05
	BT-2	13.15
	BT-3	15.40
	BT-4	17.10
Clevis Bracket	BC-1	17.60
	BC-2	25.05
	BC-3	34.35
Pivot Attachment	PM-1	15.70
	PM-2	17.35
	PM-3	22.50
	PM-4	26.65
	PM-5	38.45
	PM-6	56.80
	PM-7	70.90
Wrench Kit (Fits wrench flats on all piston rods)	FWK	17.95

Flat-1 / Square Flat-1
 Flat-II / Square Flat-II
 F02, F03, F04 (multiple power)
 F0P (multiple position)
 Flat Accessories
 EF1 / EF2
 EFP / EPQ
 Stopper / Twist Clamp
 Extruded Flat Lift Table
 Twin Bore
 NPA / LPA
 Diaphragm / Miniature Cube