

SERIES: AUTO RECIPROCATING AIR BOOSTER

Model Number: AB121

This 2:1 ratio air-to-air booster is compact and self-contained. Unit incorporates integral valve components to perform auto-reciprocating function.

Can amplify inadequate air pressure in the following situations:

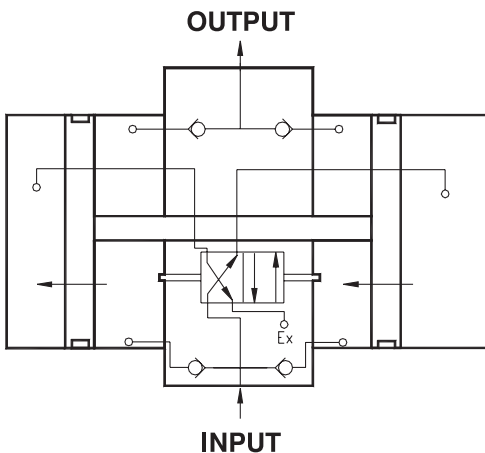
- Cylinders or Grippers: When space isn't available, a smaller bore or model size can be used with higher input PSI to achieve the desired output or grip force.
- Problem solver: Sometimes a cylinder or gripper was sized for an application, but in use, does not perform up to the production requirements. Increasing the input PSI can provide a quick and cost effective solution.



Model	Dimensions (inch)
<p>Model Number: AB121</p> <p>Availability: Stock Item</p> <p>Maximum Inlet Pressure: 125</p> <p>Prelubricated with HT-99</p>	

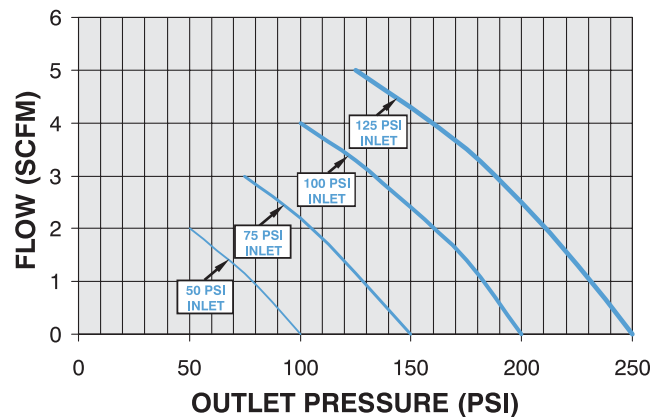
Engineering Specifications

- Maximum Input Pressure:** 125 psi
- Operating Temperature:** 15° to 160°F
- Lubrication:** HT-99 oil
- Bodies and Center Section:** Aluminum; Hard Coat with PTFE
- Mounting Plate:** Anodized Aluminum



SCHEMATIC

FLOW DATA

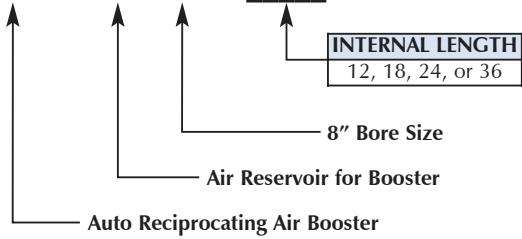


SERIES: AB121 WITH AIR RESERVOIR

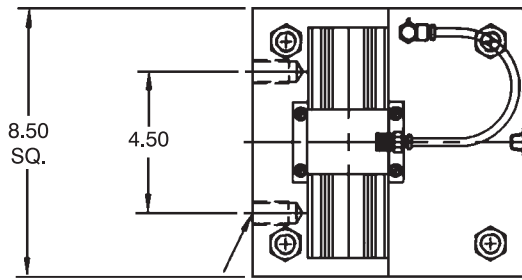
Model AB121 Air Booster furnished with Air Reservoir. Anodized Aluminum Tube and End Cap construction.

How to order:

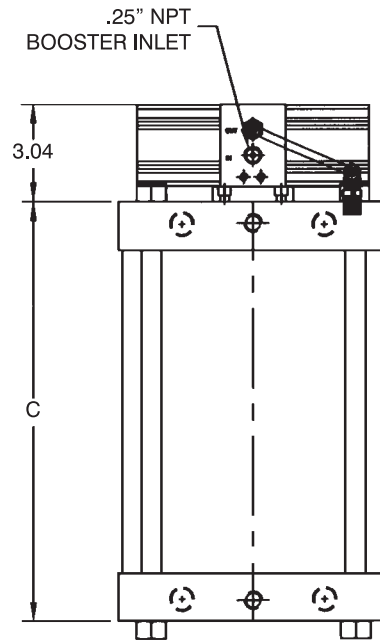
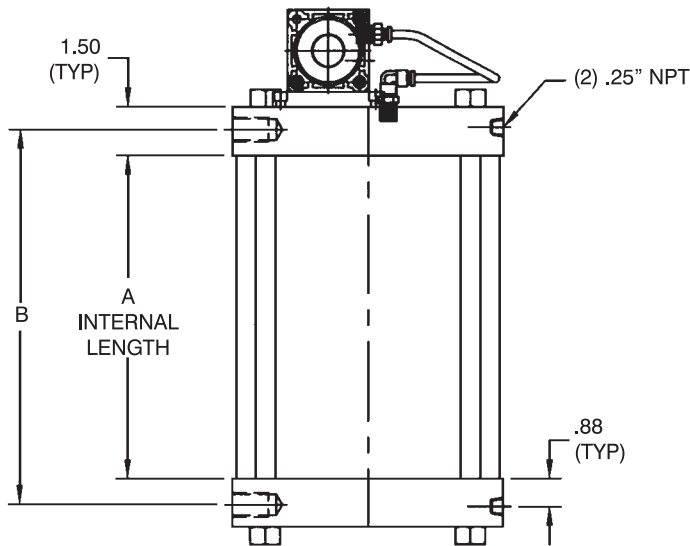
AB121 - ARB 800 X



**PRESSURE RATING
250 PSI MAX.**



(4) .75-10 TAP
X 1.13 DEEP



SERIES AB121-ARB800 X _____ AIR BOOSTER MODEL AB121 MOUNTED AND PIPED TO ARB800 AIR RESERVOIR

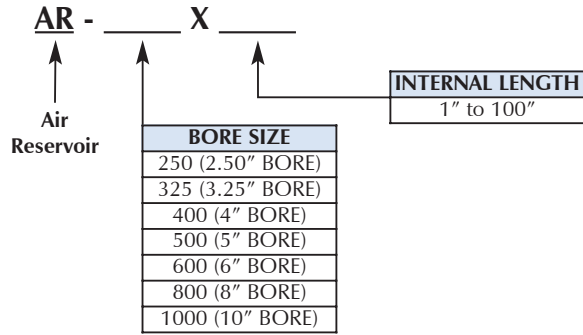
PART NUMBER & VOLUME					INTERNAL LENGTH (inches)	DIMENSIONS	
PART NO.	TANK BORE	AREA	GAL. PER IN. OF TANK	TOTAL CU. FT. PER TANK *	A	B	C
AB121-ARB800 X 12	8	50.26	.2175	.349	12	13.63	15
AB121-ARB800 X 18	8	50.26	.2175	.523	18	19.63	21
AB121-ARB800 X 24	8	50.26	.2175	.698	24	25.63	27
AB121-ARB800 X 36	8	50.26	.2175	1.047	36	37.63	39

*Internal Volume of reservoir.

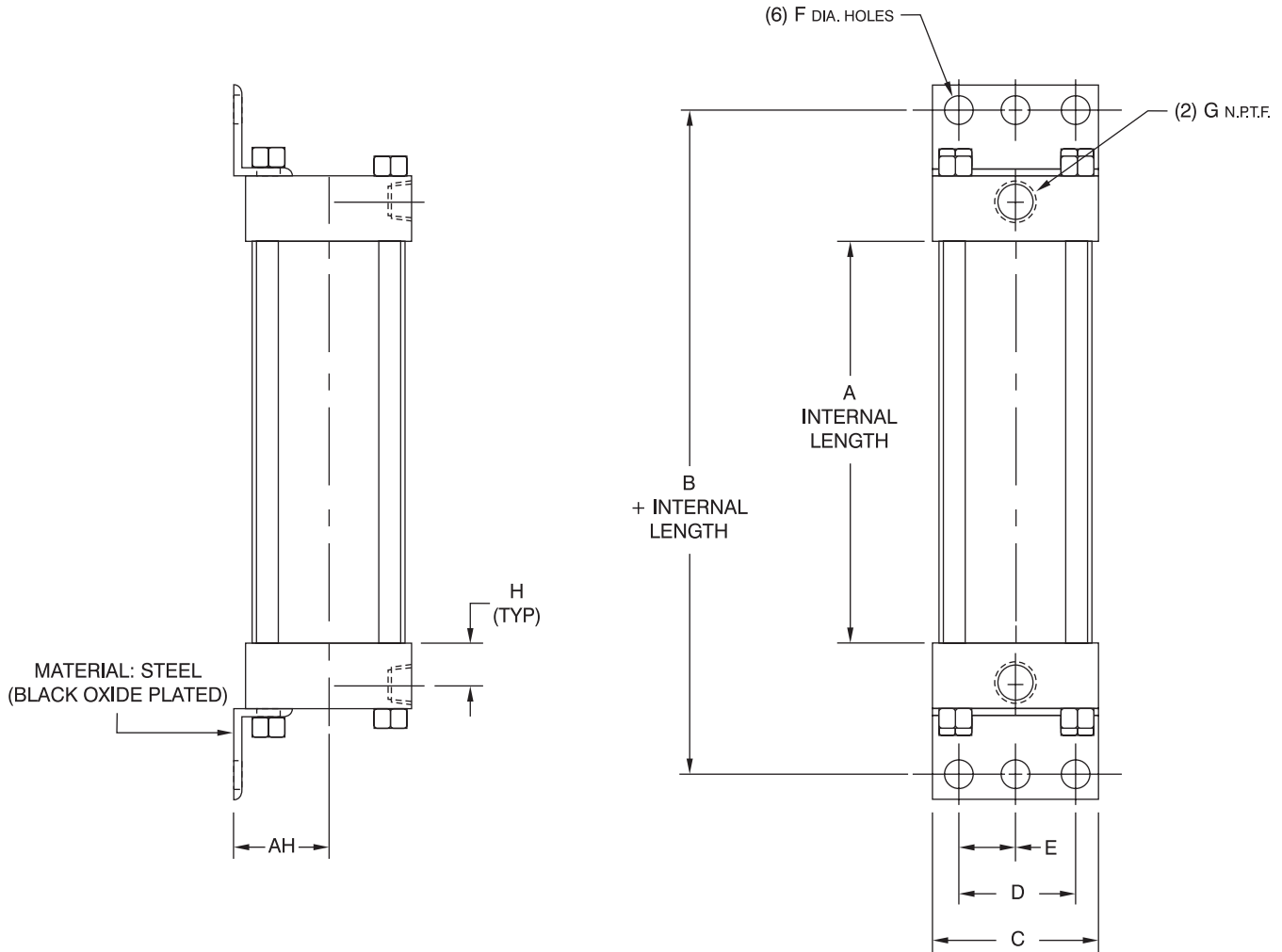
SERIES: AIR RESERVOIR

Stand-alone Air Reservoir from 2.50" to 10" bore size. Anodized Aluminum Tube and End Cap, Steel Mounting Bracket construction.

How to order:



PRESSURE RATING
250 PSI MAX.



AR SERIES (AIR RESERVOIR)

PART NUMBER & VOLUME				DIMENSIONS								
PART NO.	BORE	AREA	GAL. PER IN. OF RESERVOIR*	+ INTERNAL LENGTH		AH	C	D	E	F	G	H
				A	B							
AR-250	2.50	4.909	.0213	0	4	1.63	3	2.25	1.13	.44	.38	.63
AR-325	3.25	8.29	.0359	0	5	1.94	3.75	2.75	1.38	.56	.50	.63
AR-400	4	12.56	.0544	0	5	2.25	4.50	3.50	1.75	.56	.50	.75
AR-500	5	19.64	.085	0	5.25	2.75	5.50	4.25	2.13	.69	.50	.75
AR-600	6	28.27	.122	0	5.75	3.25	6.50	5.25	2.63	.81	.75	.88
AR-800	8	50.26	.2175	0	6.63	4.25	8.50	7.13	3.56	.81	.75	.88
AR-1000	10	78.54	.340	0	7.63	5.31	10.63	8.63	4.31	.81	1	1.13

*Internal Volume of reservoir.