



Actuator Mounting Hole Locations for Transition Plates

The purpose of this document is to provide supplementary dimensional information to our catalogs in reference to mounting hole locations.

Included are drawings and dimensional tables for our Ultram[®] Slide, Pneu-Turn[®] and Linear Thruster. The additional dowel pin holes will be present when specified on the Ultram[®] Slide (option "D") and Linear Thrusters (option "D") and will be included on all Pneu-Turn[®] actuators which have ball bearings specified (option "R").

Ø10 RADIUS OR .010 X 45° MAX. CHAMFER OR FILLET TO BE PROVIDED AT ALL CORNERS UNLESS OTHERWISE SPECIFIED.

D-56091

CYLINDER BORE	"A"	"B"	"D"
020 (9/16")	1.000	.750	Ø.1270/.1280 x .240/.260 DP.
040 (3/4")	1.375	.876	Ø.1895/.1905 x .410/.430 DP.
090 (1 1/16")	1.750	1.250	Ø.2520/.2530 x .410/.430 DP.
170 (1 1/2")	2.500	1.750	Ø.3145/.3155 x .560/.580 DP.

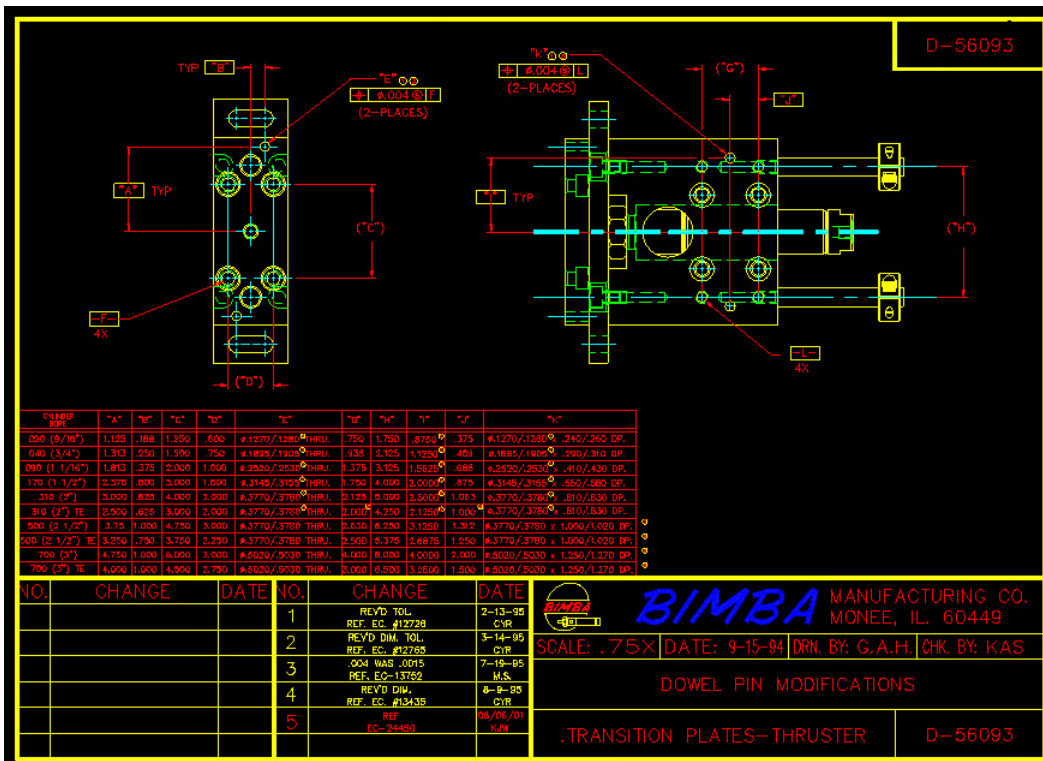
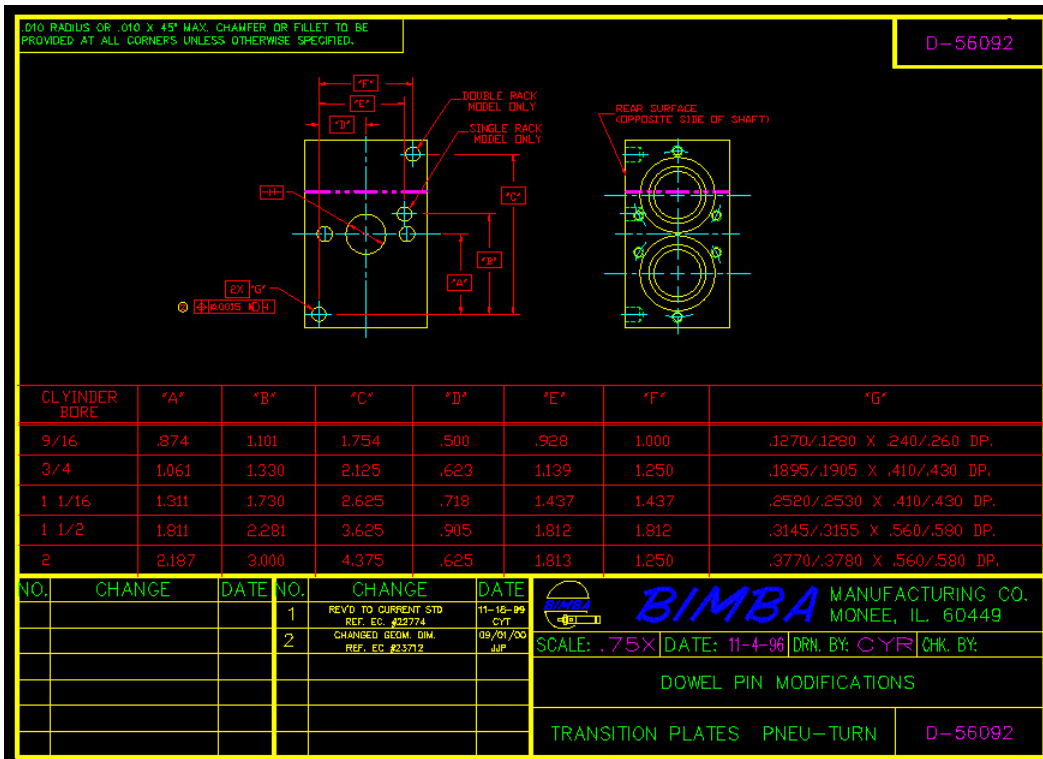
NO.	CHANGE	DATE	NO.	CHANGE	DATE
7	CHANGED BROW. DIM. REF. EC #23712	09/01/00 JWP	1	REV'D TOL. REF. EC #12728 .875 WAS .877 REF. EC-12903	2-13-95 CYR
			2	REV'D DIM. & OMIT "C" REF. EC #26705 094 WAS .0015 REF. EC-13752	3-9-95 M.S.
			3	REV'D DIM. & OMIT "C" REF. EC #26705 094 WAS .0015 REF. EC-13752	3-14-95 CYR
			4	REVISED FOR INSPECT ABILITY REF: EC #21954	7-19-95 M.S.
			5	REVISED TO CORRECT "D" REF. EC #22297	04/23/99 JCL
			6		08/23/99 JCL

BIMBA MANUFACTURING CO.
 MONEE, IL. 60449

SCALE: .50X DATE: 9/12/94 DRN. BY: G.A.H CHK. BY: K.A.S.

DOWEL PIN MODIFICATIONS

TRANSITION PLATES-ULTRAN SLIDES
D-56091



The information presented is in Bimba's best engineering opinion and should be used for reference only. Recommendations derived should be verified under actual operating conditions. Bimba reserves the right to change specifications without prior notice.

Bimba Manufacturing Company
Monee, IL 60449-0068
Telephone: 708.534.8544
Email: support@bimba.com
www.bimba.com
Rev Level: 1

Leaders in Actuation.

To learn more about this product, scan this QR code with your mobile device.

