

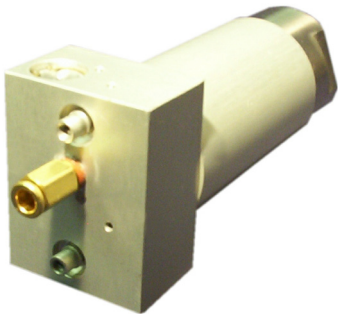
# Impact Actuator Keeps Products Flowing

**Challenge:**

A customer was looking for a way to dispense bulk food product onto a conveyor. The current application the customer was using to accomplish this process was getting jammed up, and causing long delays to get the product flowing again.

**Solution:**

Bimba developed an impact actuator that delivers kinetic energy in order to keep the product flowing out of the hopper. The unit pictured can produce up to 400 in-lbs of energy. In addition to the integrated valving, the cylinder also allows for timing adjustment through flow control adjustment.

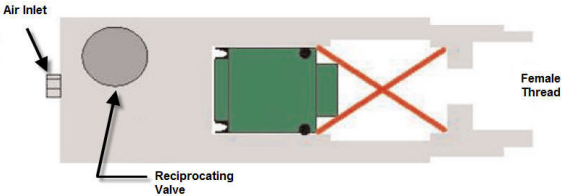


**Benefits:**

- Integrated self-reciprocating circuit.
- Adjustable frequency.
- Reduces downtime due to jamming.

**Other Applications:**

- Belly Dump on Trailers
- Dispensing
- Packaging



Vibrator

